



**LET'S
GO** **MARYLAND
PARKWAY**

SAFE, COMFORTABLE, ACCESSIBLE CONNECTIONS!

Bi-Weekly Stakeholder Meeting #49

May 26, 2026

Construction in the Corridor



- Corridor split into 11 segments
- Watch for lane shifts as work progresses in each area
- Business and residential access will be maintained.
- Whenever possible, additional travel lanes will be provided.

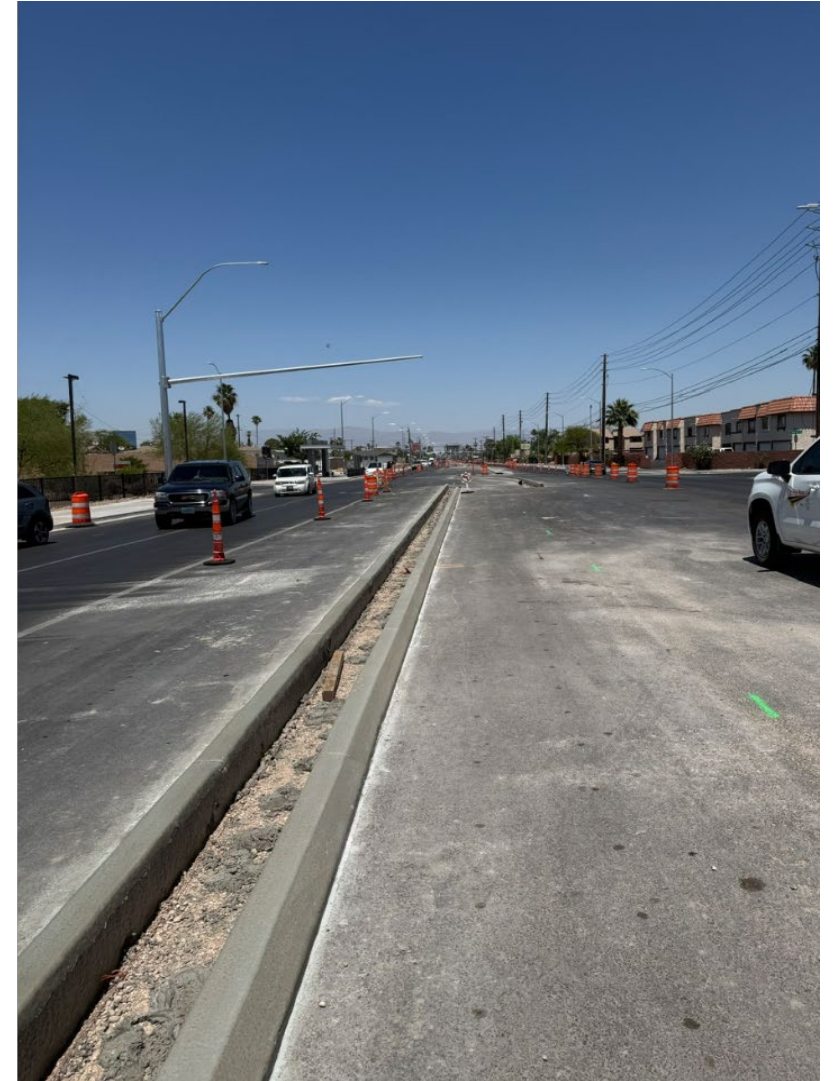
1. Maryland, Russell to Tropicana



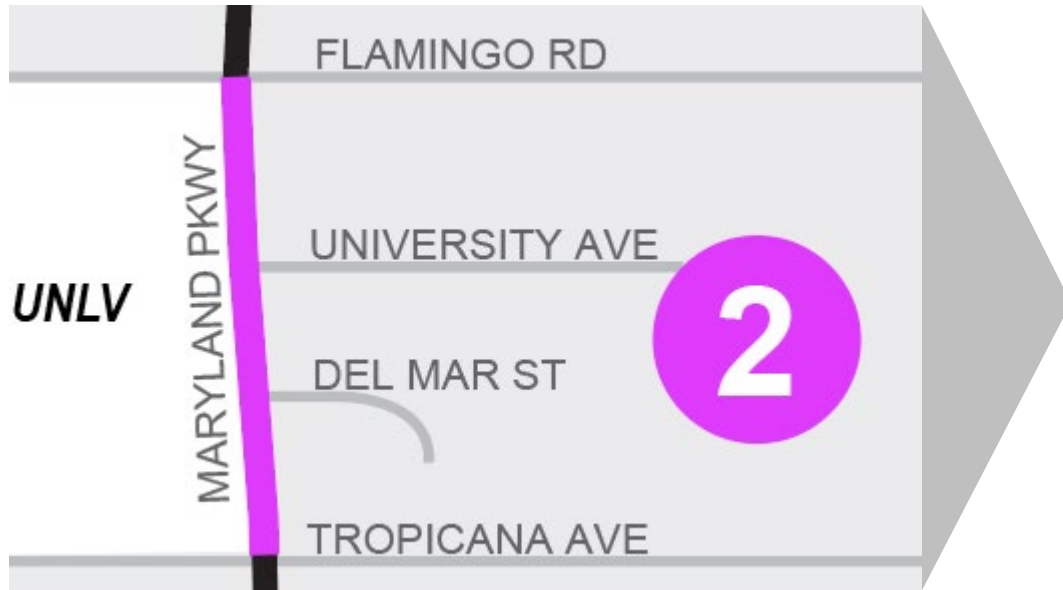
Construction of sidewalk and median islands.

Work Hours: 6am-4pm

- **Russell to Lulu:** One lane open in each direction
- **Lulu to Tropicana:** Two lanes open in each direction



2. Maryland, Tropicana to Flamingo



Construction of sidewalk and utility laterals.

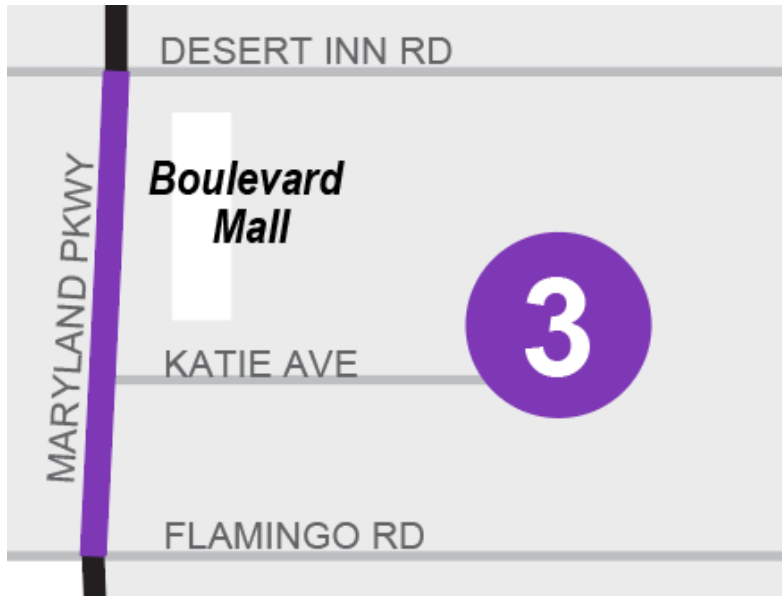
Work Hours: 6am-4pm

- **Tropicana to Harmon:** Two lanes open in each direction
- **Harmon to Flamingo:**
 - Day: Two lanes open southbound, one lane open northbound
 - Night: One lane open in each direction



Paving the east half (Harmon to Flamingo) during the week of May 25.

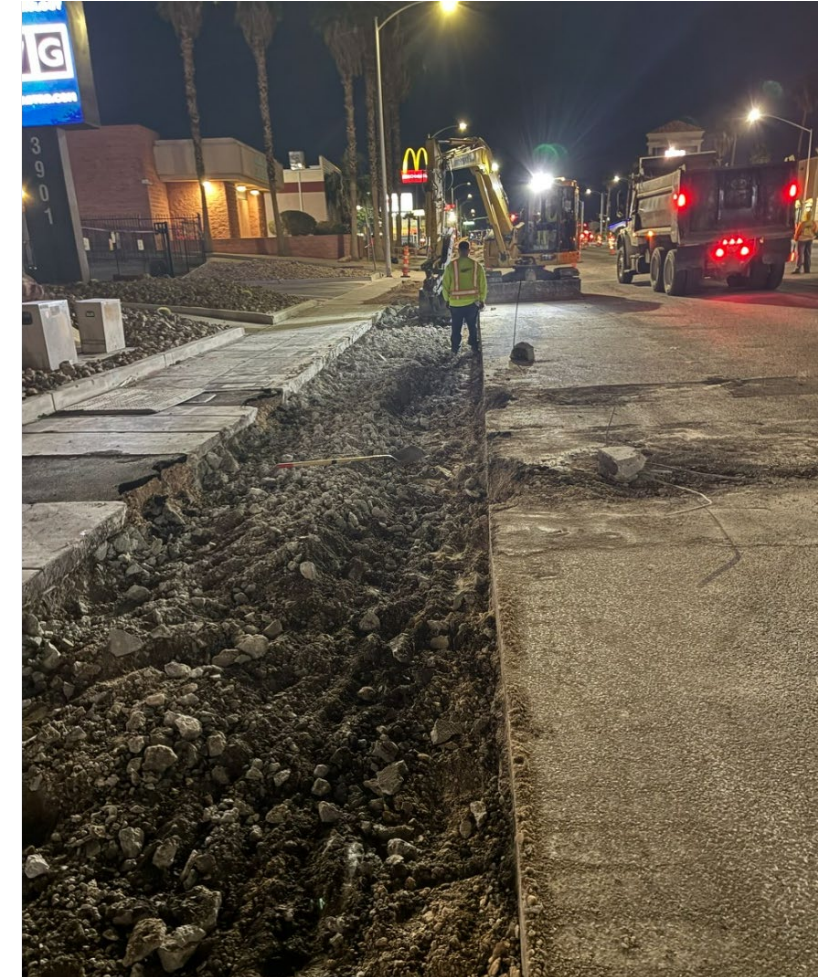
3. Maryland, Flamingo to Desert Inn



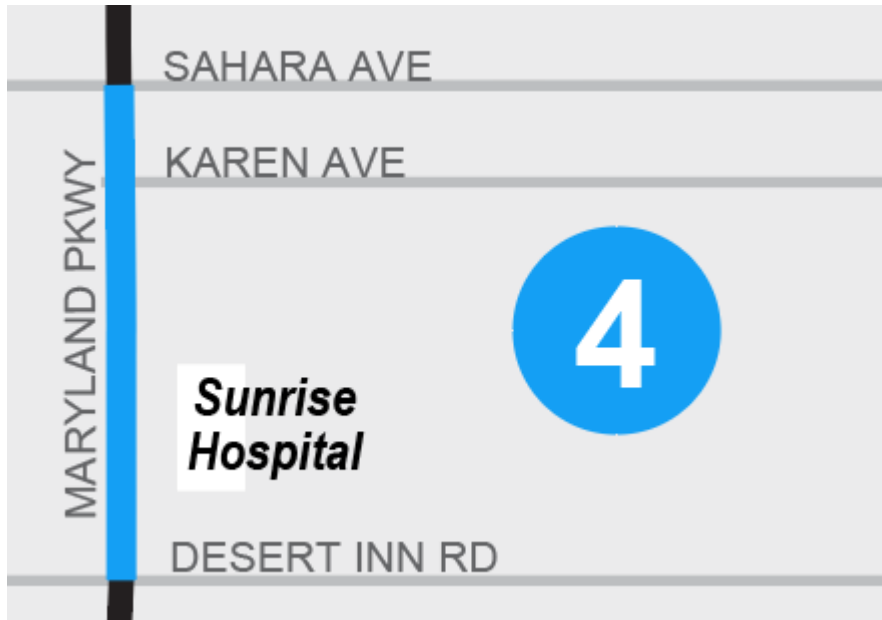
Construction of driveways, install of waterline, conduit, and traffic signals.

Work Hours: 8pm-7am

- **Day:** Two lanes open in each direction
- **Night:** One lane open in each direction



4. Maryland, Desert Inn to Sahara



Install of conduit and waterline, construction of sidewalk.

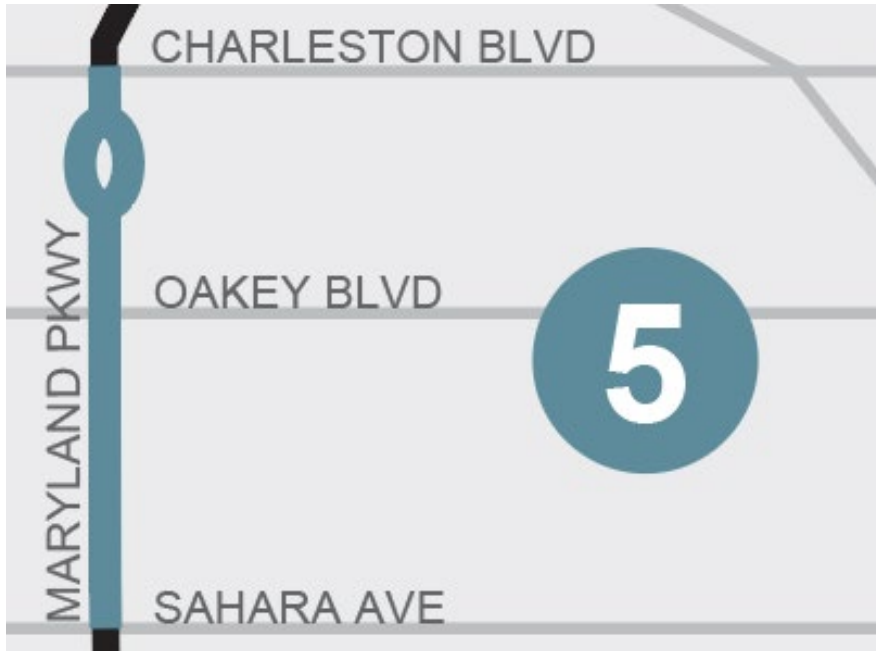
Work Hours: 8pm-7am

- **Desert Inn to Vegas Valley:** Two lanes open in each direction.
- **Vegas Valley to Karen:**
 - Day: Two lanes open southbound, one lane open northbound,
 - Night: One lane open in each direction.
- **Karen to Sahara:**
 - Day: Two lanes open in each direction
 - Night: One lane open in each direction



Paving the west half (Vegas Valley to Karen) during the week of May 25.

5. Maryland, Sahara to Charleston



San Pedro to Oakey: Final roadway striping and signage

Franklin to Charleston: Traffic signals, miscellaneous concrete work, final striping and signage, coordination with NV Energy.

Work Hours: 5am-1pm

- One lane open in each direction

6. Maryland/Rue 13, Charleston to Carson



Final striping and signage.

Work Hours: 5am-1pm

- One lane open in each direction.



7. Carson Ave, Casino Center to 13th



Utility adjustments, placing remaining concrete surfaces, final striping and signage.

- Work Hours:
 - 5am-1pm (Casino Center to 7th)
 - 7am-3pm (7th to 13th)
- One lane open in each direction



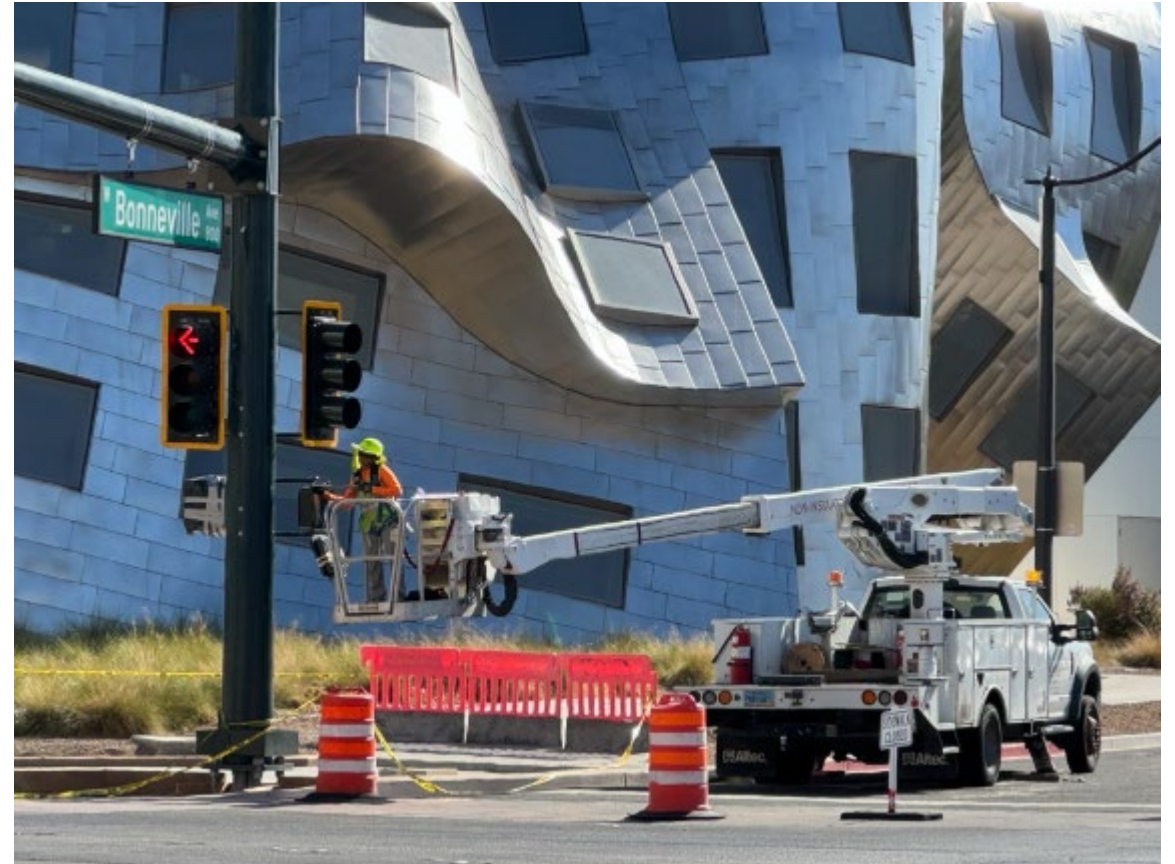
8. Bonneville Ave, MLK to Casino Center



Utility adjustments, placing remaining concrete surfaces, final striping and signage.

Work Hours: 5am-1pm

- One lane open in each direction between I-15 and the railroad underpass.



9. Alta Dr, MLK to Tonopah



Final clean-up work as needed.

- Work Hours: 5am-1pm

Adjacent Project: www.livetheoscar.com

10. Tonopah Dr, Wellness to Alta



Final clean-up work as needed.

- Work Hours: 5am-1pm

Adjacent Project: www.livetheoscar.com

11. Wellness Way, Tonopah to Shadow



Final clean-up work as needed.

- Work Hours: 5am-1pm

Responding to Questions

Communication Channel	Response Format	Response Timeframe	Inquiries to Date*
Bi-weekly stakeholder meeting	Live during the meeting or follow-up via email after the meeting	Within 24 hours	16
Email	Email	Within 2 business days	172
Hotline	Phone Call	Within 2 business days	101

*as of 5.22.26, only includes inquiries submitted via these communication channels

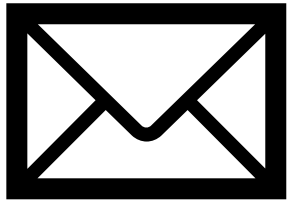


Questions, Comments, Concerns?

We are always available



MarylandParkway.com



MarylandParkway@rtcshv.com



702-676-1899

Next Meeting: Monday, June 8