

The background of the slide is a wide-angle photograph of a city skyline at sunset. The sky is a mix of deep purple, blue, and orange, with wispy clouds. The city lights are visible in the foreground, and the silhouettes of mountains are in the distance. A vertical red bar is on the right side of the slide, and a series of horizontal grey bars of varying widths are on the left side.

# **LET'S GO** MARYLAND PARKWAY

SAFE, COMFORTABLE, ACCESSIBLE CONNECTIONS!

Bi-Weekly Stakeholder Meeting #36

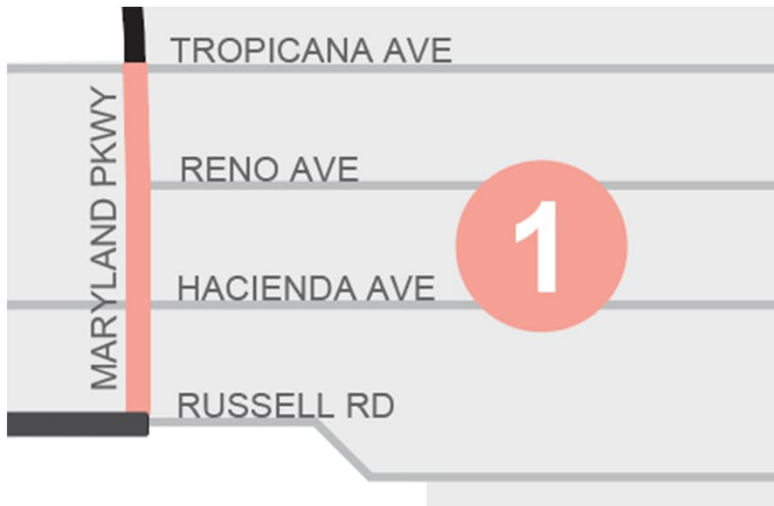
November 24, 2025

# Construction in the Corridor



- Corridor split into 11 segments
- Watch for lane shifts as work progresses in each area
- Business and residential access will be maintained.
- Whenever possible, additional travel lanes will be provided.

# 1. Maryland, Russell to Tropicana

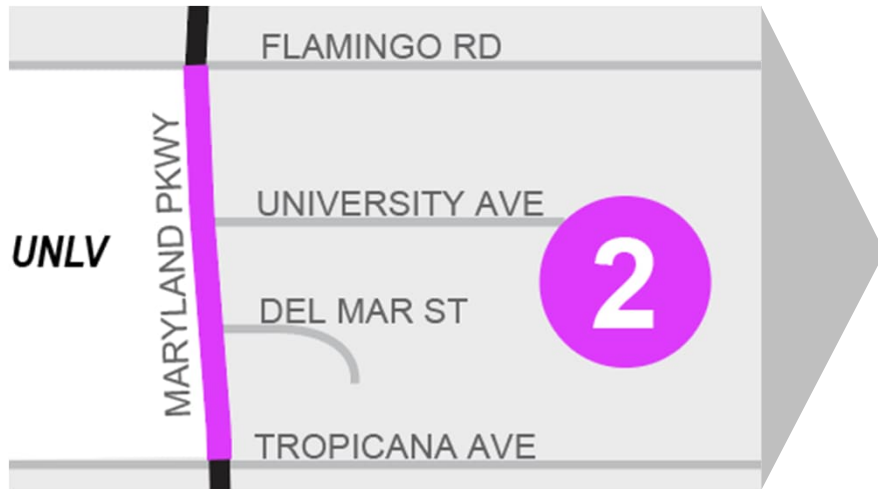


*Sewer work, construction of driveways.*

- Work Hours: 6am-2pm
- Day: One lane open in each direction
- Night: Two lanes open in each direction



## 2. Maryland, Tropicana to Flamingo



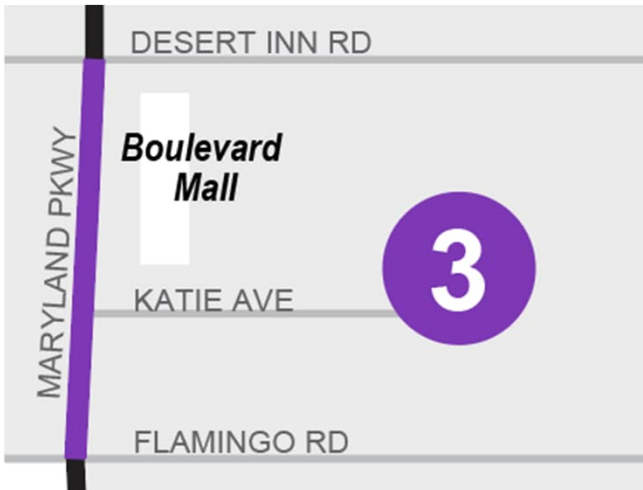
*Install of conduit and traffic signals, construction of curb, gutter, sidewalk and driveways.*

- Work Hours: 6am-2pm
- Two lanes open in each direction





### 3. Maryland, Flamingo to Desert Inn

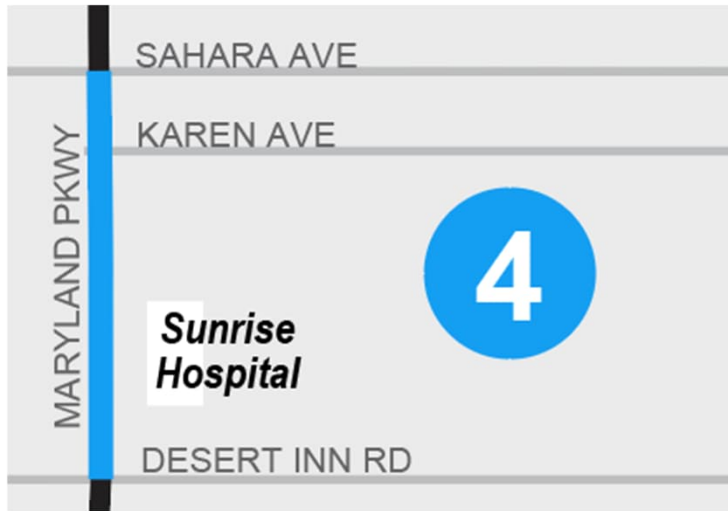


*Install of waterline, streetlights, and traffic signals.*

- Work Hours: 8pm-7am
- Day: Two lanes open in each direction
- Night: One lane open in each direction

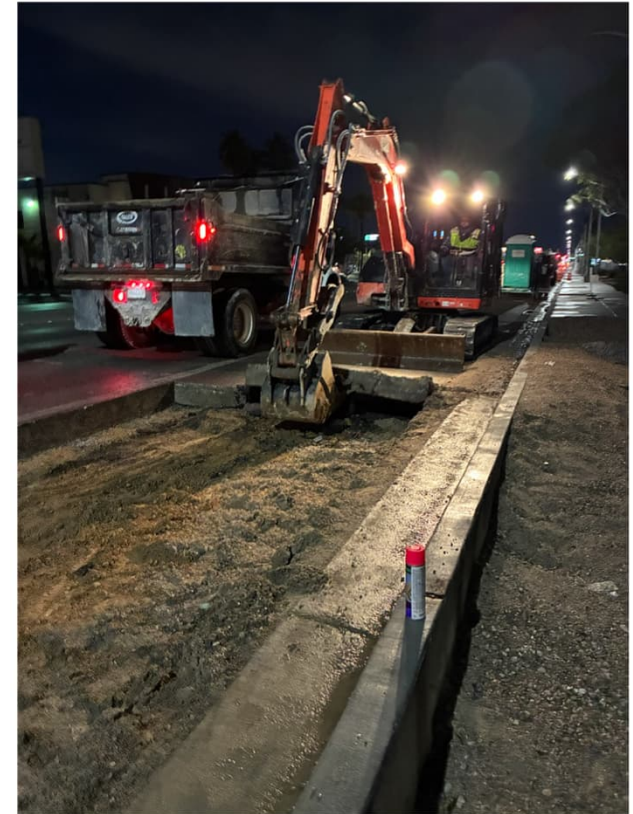


## 4. Maryland, Desert Inn to Sahara

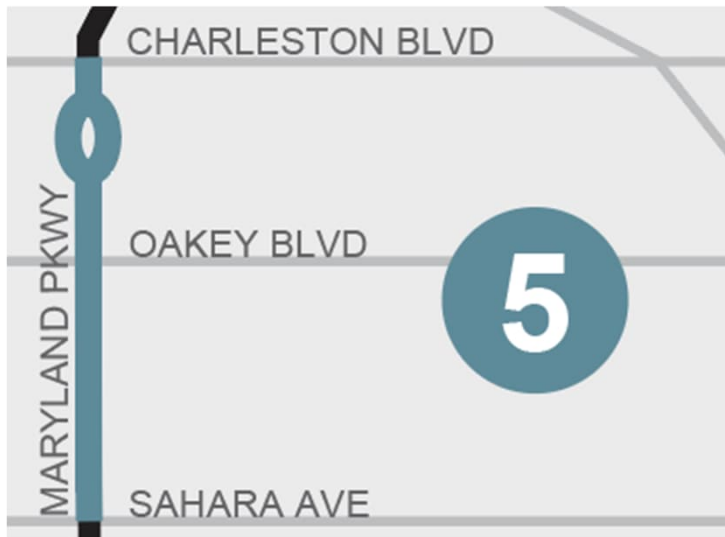


*Install of conduit, streetlights, and traffic signals, waterline install from Karen Ave moving north.*

- Work Hours: 8pm-7am
- Day: Two lanes open in each direction
- Night: One lane open in each direction



## 5. Maryland, Sahara to Charleston



*Ongoing coordination with NV Energy for permanent power*

- Work Hours: 5am-1pm
- One lane open in each direction

Adjacent Project Franklin to Charleston:

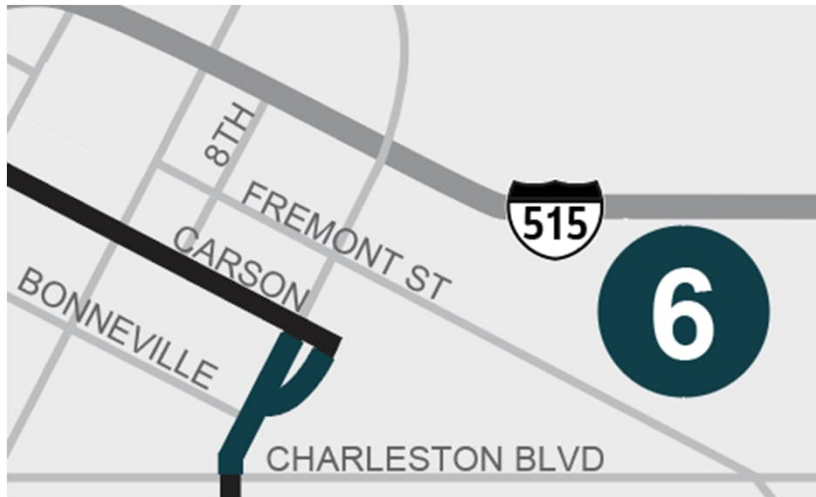
City of Las Vegas Charleston Storm Drain Construction Project is ongoing – Monday through Thursday, and Fridays as needed. Expect traffic impacts on Maryland Pkwy through early 2026.



- Oakey Blvd closures at Maryland Pkwy:
- Intermittent closures of Oakey Blvd at Maryland Pkwy for traffic signal work, pending coordination with NV Energy.



## 6. Maryland/Rue 13, Charleston to Carson



*Property tie-ins, construction of median islands, sidewalk, traffic signals, and streetlights.*

- Work Hours: 5am-1pm
- One lane open in each direction



Adjacent Project, Charleston to Bonneville: City of Las Vegas Charleston Storm Drain Construction Project is ongoing – Monday through Thursday, and Fridays as needed. Expect traffic impacts on Maryland Pkwy through early 2026.



## 7. Carson Ave, Casino Center to 13th



Casino Center Blvd to 6th St: *Sidewalk construction, traffic signals, and streetlights. Watch for pedestrian detours in the area. All business access maintained.*

- Work Hours: 5am-1pm
- One lane open in each direction

Carson Ave, 7th St to 13th St: *Utility trenching, removal of sidewalk, and roadway excavation. Watch for pedestrian detours in the area.*

- Work Hours: 7am-3pm
- One lane open in each direction



## 8. Bonneville Ave, MLK to Casino Center



*Construction of curb, gutter, and sidewalk.*

Work Hours: 5am-1pm

- Two lanes open in each direction



## 9. Alta Dr, MLK to Tonopah



*Ongoing coordination with NV Energy for permanent power.*

- Work Hours: 5am-1pm
- Two lanes open in each direction with lane reductions as needed

# 10. Tonopah Dr, Wellness to Alta



*Ongoing coordination with NV Energy  
for permanent power.*

- Work Hours: 5am-1pm



# 11. Wellness Way, Tonopah to Shadow



*Ongoing coordination with NV Energy  
for permanent power.*

- Work Hours: 5am-1pm

# Responding to Questions

Communication Channel	Response Format	Response Timeframe	Inquiries to Date*
Bi-weekly stakeholder meeting	Live during the meeting or follow-up via email after the meeting	Within 24 hours	16
Email	Email	Within 2 business days	126
Hotline	Phone Call	Within 2 business days	74

\*as of 11.21.25, only includes inquiries submitted via these communication channels

# November Holidays

SUNDAY	MONDAY	TUESDAY	WEDNESDAY	THURSDAY	FRIDAY	SATURDAY
						1
2	3	4	5	6	7	8
9	10	11 Veterans Day	12	13	14	15
16	17	18	19	20	21	22
23	24	25	26	27 Thanksgiving	28	29
30						



Questions, Comments, Concerns?



# We are always available



[MarylandParkway.com](http://MarylandParkway.com)



MarylandParkway@rtcsnv.com



702-676-1899

Next Meeting: Monday, November 24